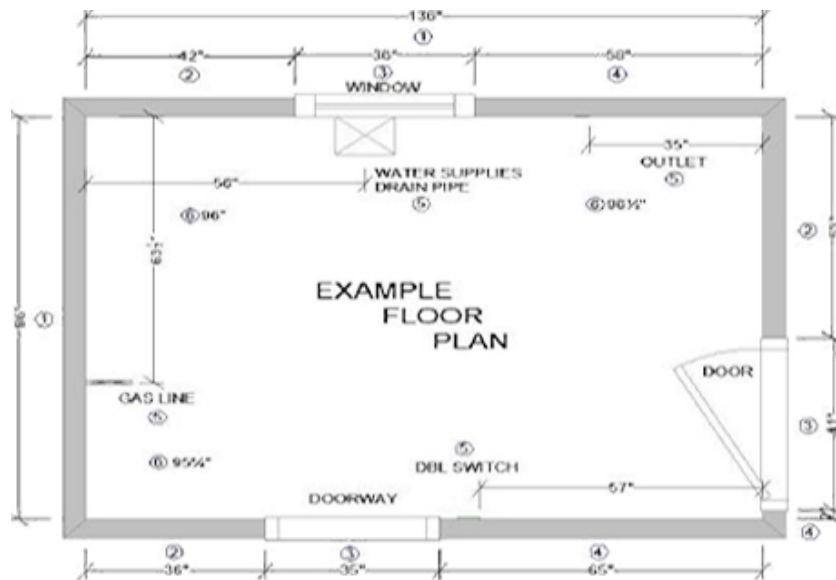




HOW TO MEASURE YOUR KITCHEN



Using a tape measure and paper, measure as outlined here (drawing does not need to be drawn to scale; only measurements need to be correct)

1. Measure from wall to wall at 36" height.
 2. Measure from corner to window or door.
 3. Measure across the window or door opening from trim edge to trim edge (indicate window overall height and height from flooring).
 4. Measure from edge of trim to far wall (Compare sum of #2, #3, and #4 measurements to step #1).
 5. Mark exact location of water supplies, drain, gas line, and electrical outlets and switches on drawing.
 6. Measure from floor to ceiling in three areas of kitchen where cabinets will be placed.
- Your completed floor plan should resemble the diagram shown.
Take several photos of your existing kitchen to bring with you.

WALL'S WIDTH

- You will need to measure twice, once near the floor and other near the ceiling.
- If there is a wall or window in the way, measure the size of the object as well as from the wall to the object.
- Do this to every wall in your room

WALL'S HEIGHT

- Measure from the floor to the ceiling.
- Also be sure to measure the height of windows and doors in the room

CREATE A BUDGET WORKSHEET

This will help us determine which products to use. This budget should include a minimum and maximum range you are willing to spend on each item. All percentages are based upon the market value of your home. Our suggested minimum budget is 10% of your home's market value; the maximum amount is 20%.

- Cabinets & Countertops: 50% of total cost
- Sink, Faucet & Disposal: 5%
- Appliances: 10%
- Flooring: 10%
- Labor: 25%